



# Installation Instructions CB33

08|2009 v.2.1

## Ordering Information:

The CoolBalance CB33 is a surface mount circular cable seal. As such it will seal any openings smaller than the C-cutout in the table below. A CB33-04 can be used in a surface mount configuration to seal any opening 4.75" in diameter or less. A CB33-06 can be used in a surface mount configuration to seal any opening smaller than 7" diameter. Edge protection for rough cutout edges would have to be addressed separately.

The CB33EP-04 and -06 utilize an edge protector that sits down into the cutout. (See chart below.) Cutout dimension for those are per the table below.

**Note:** Surface mounted units can be supplied in a split holder arrangement to accommodate existing cable runs. Model designation is CB33S. Not available with edge protection. Dimensions remain unchanged.

Use floor manufacturer's recommendation on cutting limitations and cutting tools.

Design load capacity of the tile imposes limitations on the size and location of the cutout or may require additional supports. Consult the manufacturer's manuals.

## Kit Includes:

CB33-xy assembled with brush, circular holder with optional edge protector  
 (4) #12 self-tapping screws, black  
 installation instructions

## Tools Required:

- Hole saw (new installation)
- CB33EP-04, use a 4-3/4" dia saw
- CB33EP-06, use a 6-31/32" dia saw (if 7 in. is not available)
- Phillips bit
- Optional cleaner

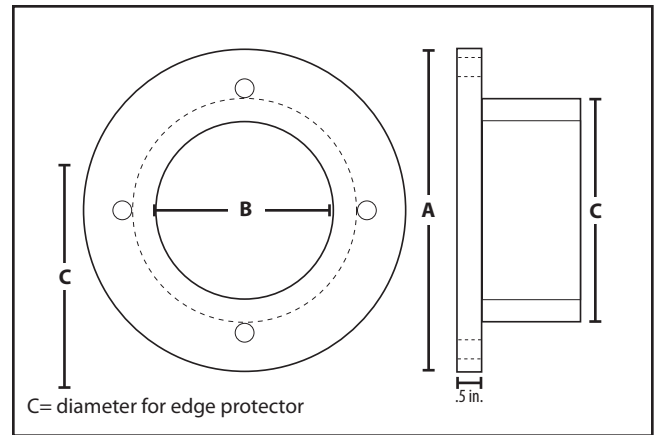


figure 1

## New Installation & Preparation (cables not run):

1. Make sure there are no sharp burrs on the top of the cutout.
2. Clean around the top edges of the cutout.
3. Place the seal in the cutout to ensure proper fit.
4. Seal should sit flat with little or no side to side movement.
5. If double-sided tape will be used, remove the seal, attach tape to the underside of the CB33 and replace in the cutout.
6. Fasten securely using the (4) self-taping screws.
7. Do not over-torque the screws.

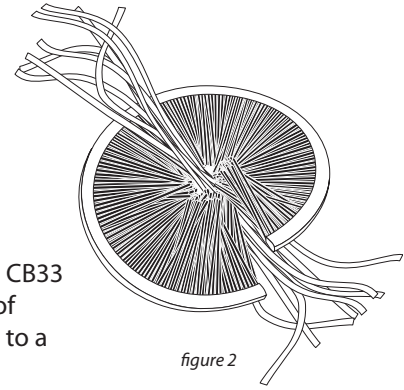
Model	A Dim*	B Dim	C Dim	Cut Out
CB33-04	5.75	3.25	4.50	4.75 or less
CB33EP-04	5.75	3.25	4.50	4.75
CB33S-04	5.75	3.25	4.50	4.75 or less
CB33-06	8.00	5.45	6.75	7.00 or less
CB33EP-06	8.00	5.45	6.75	7.00 <sup>†</sup>
CB33S-06	8.00	5.45	6.75	7.00 or less

\*all dimensions shown in inches

<sup>†</sup> If a 7 inch hole saw is not available, a 6 31/32 will work

### Installation with Existing Cables in Place (CB33-Split Ring):

1. Make sure there are no sharp burrs on the top of the cutout.
2. Clean around the top edges of the cutout.
3. Separate the brush and holder and wrap around the cables. (See figure 2.)
4. Position the CB33 over the opening.
5. Using the 4 self-tapping screws or double sided tape, secure to the floor.



### Effective Installation - Best Practices:

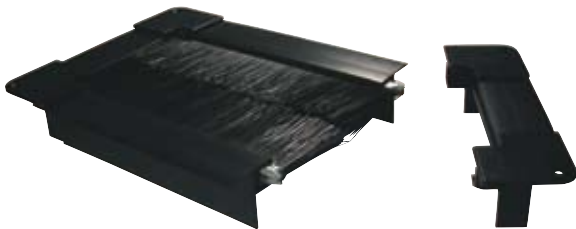
The purpose of the seal is to prevent the loss of cool air through the cutout. While the CB33 is an effective seal, there are steps the installer can take to improve the effectiveness of the seal. Where possible, bundle like cables using cable tie wraps. This keeps the gaps to a minimum.

### Customer Support:

For assistance, please contact us at: **800.787.7325** M-F 8-5 EST  
Or email us: [coolbalance@sealeze.com](mailto:coolbalance@sealeze.com)

CoolBalance offers a range of products for data center energy efficiency.

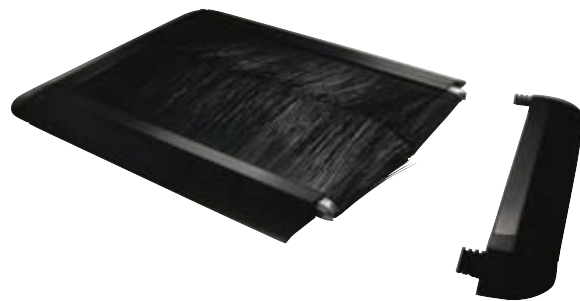
### CB11 | In-Floor Seal



Construction: In-floor flush mounting with removable end for mounting around existing cables. Built in edge protection from rough edge cuts.

High impact ABS  
Hole Sizes: from 5" x 5" to 10" x 24"

### CB22 | Surface Mount



Construction: Surface mount with removable end for mounting around existing cables.

High impact ABS  
Hole Sizes: from 5" x 5" to 10" x 24"



**800.787.7325**

8000 Whitepine Road | Richmond, VA 23237 | [www.sealeze.com](http://www.sealeze.com)

