



# In-Floor

## CB11

### APPLICATION

The CB11 in-floor seal is designed for installation in new or existing data center raised floor tiles, with or without power or communication cables installed. The CB11 series can be installed in access holes ranging from 5 x 5 inches to 10 x 24 inches. For installations with cables in place, the end of the CB11 can be removed and placed around the existing cables. For smaller cutout sizes, use CoolBalance Circle Seals CB33-04 and CB33-06. For larger holes, ask your CoolBalance Sales Representative for a CoolBalance solution. The unique design of the CB11 in-floor seal enables field modification permitting seals designed for longer width holes to be used in holes with the same depth but shorter width.

**Construction:** Multi-piece black ABS plastic frame, Sealeze high-quality nylon brush with XtraSeal technology

**Hole Sizes:** 5 x 5 in. to 10 x 24 in.

**Installation:** No. 8 self drilling screws (supplied) or double-sided tape (not included)

### TILE CUTOUT SPECIFICATIONS

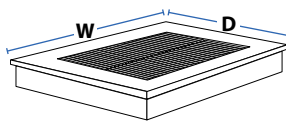
Cutouts must be no less than the hole size specified for the seal model no. and no more than .125 in. larger in any dimension.

### MODEL NUMBER CONSTRUCTION

CB11-DDWW where DD= cutout depth, WW=Width

#### Example Model Numbers: CB11

Cut Out		Model Number
Depth inches	Width (5-24 in.)	
5	WW	CB11-05WW
6	WW	CB11-06WW
8	WW	CB11-08WW
10	WW	CB11-10WW
8	12 in.	CB11-0812



*example part number*

### DESCRIPTION

The CB11 In-Floor Cable Seal consists of four corner pieces, four side rails and two, high-quality Sealeze nylon brushes. The assembled seal can be mounted in the cutout prior to cables being run, or one end of the seal can be removed to allow the seal to be fit around existing cables.

The CB11 in-floor seal has built-in edge guards to shield the cables from the rough edges of the floor cut out.

For installations against a wall or other obstruction, the CB11H can be utilized (half of a CB11).

The seal can be affixed to the floor using self-drilling screws (provided) or double-sided tape.

Using our XtraSeal™ technology, the CoolBalance brush seal provides the most effective seal to prevent the leakage of pressurized air around power and communications cables in floor cutouts.



Brush sealing solutions for over 30 years.

[coolbalance.biz](http://coolbalance.biz)

8000 Whitepine Road | Richmond, VA 23237  
 sealeze.com | coolbalance@sealeze.com  
 p. 800.787.7325 | f. 800.448.2908



## CB11H

For cutouts against a wall or other obstruction – a CB11H consists of two corners, three sides and one brush.

### MODEL NUMBER CONSTRUCTION

CB11H-DDWW where DD= cutout depth, WW=Width

#### Example Model Numbers: CB11H

Cut Out		Model Number
Depth inches	Width (5-24 in.)	
2	WW	CB11H-02WW
3	WW	CB11H-03WW
4	WW	CB11H-04WW
5	WW	CB11H-05WW
3	10 in.	CB11H-0310

*example part number:*

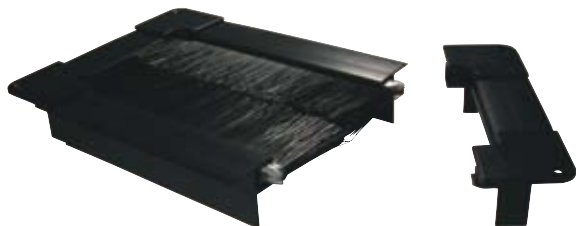
### INSTALLATION

#### For standard size holes:

Select the CoolBalance product that fits the cutout (CB11H-0412 for 4 x 12 in. cutout). Simply place the CoolBalance seal into the cutout hole and affix with the provided screws or double-sided tape (not provided). The seal is ready for cable installation.

#### For cutout holes with shorter than standard length:

Select the seal with a longer width closest to the cutout width. The side channels and brushes can be cut to length using a hand hack saw (the two side channels that hold the brush) and a bolt cutter for the brush. The brush and side pieces are easily re-assembled and the end pieces connected to the side channels. The seal is ready for cable installation.

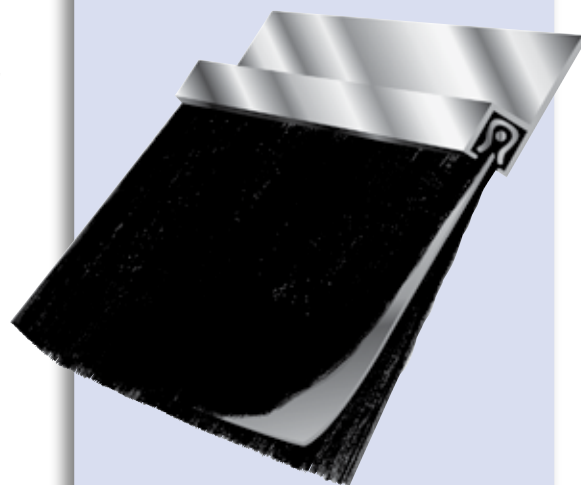


### About Sealeze, A Unit of Jason Incorporated

For more than 30 years, engineers, contractors and installers have looked to Sealeze to design and manufacture brush sealing solutions for a wide variety of industrial and air sealing applications. Sealeze manufactures strip brush in the broadest range of sizes, with the largest number of filament types, and provides the widest range of holders to meet the needs of almost any application. Sealeze has been providing brush sealing solutions in data centers, from floor cable seals to technical furniture and cabinets, since the mid 1990s.

## XtraSeal™ TECHNOLOGY

Sealeze XtraSeal™ is a technology that provides an effective seal between two areas of different dynamic pressures. XtraSeal brush seals use a solid sheet of thin, flexible material (EPDM membrane) sandwiched between layers of filament. The filaments hold the membrane in position to provide an additional, almost impenetrable air barrier.



Brush sealing solutions for over 30 years.

8000 Whitepine Road | Richmond, VA 23237  
 sealeze.com | coolbalance@sealeze.com  
 p. 800.787.7325 | f. 800.448.2908

[coolbalance.biz](http://coolbalance.biz)

