



Surface Mount CB22

APPLICATION

The CB22 surface-mount cable seal is designed for installation in data center raised floor tiles where the in-floor style, CB11, is not practical due to irregular shaped cutouts (sides of unequal length or corners that are not square) or odd sizes. The CB22 series can be installed in access holes ranging from 5 by 5 in. to 10 by 24 in. For smaller cutout sizes, use CoolBalance Circular Seals CB33-04 and CB33-06. For larger holes, ask your CoolBalance Sales Representative for a CoolBalance solution. The unique design of the CB22 surface-mount cable seal enables field modification to permit seals designed for longer width holes to be used in holes with the same depth but shorter width. Edge protection would have to be supplied separately. For installations with cables in place, one end of the CB22 can be removed and the seal placed around the existing cables.

Construction: Multi-piece black ABS plastic frame, Sealeze high-quality nylon brush with XtraSeal technology

Hole Sizes: 5 x 5 in. to 10 x 24 in.

Installation: No. 8 self drilling screws (supplied) or double-sided tape (not included)

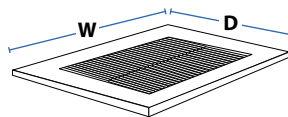
MODEL NUMBER CONSTRUCTION

CB22-DDWW where DD= cutout depth, WW=Width

Example Model Numbers: CB22

Cut Out		Model Number
Depth inches	Width (5-24 in.)	
5	WW	CB22-05WW
6	WW	CB22-06WW
8	WW	CB22-08WW
10	WW	CB22-10WW
8	12 in.	CB22-0812

:example part number



DESCRIPTION

The CB22 surface-mount cable seal consists of four corner pieces, four side rails and two, high-quality Sealeze nylon brushes. The CB22 surface mount design permits the seal to be modified in the field to accommodate a variety of hole sizes and/or assembled around already installed cables. The CB22 side rails and brush can be cut to size with simple hand tools to accommodate shorter cutouts.

For installations against a wall or other obstruction a CB22H (half or a CB22) may be the best choice.

The CB22 Surface-Mount Cable Seal can be affixed to the floor using self-drilling screws (provided) or double-side tape.

Using our XtraSeal™ technology, the CoolBalance brush seal provides the most effective seal to prevent the leakage of pressurized air around power and communications cables in floor cutouts.



Brush sealing solutions for over 30 years.

coolbalance.biz

8000 Whitepine Road | Richmond, VA 23237
 sealeze.com | coolbalance@sealeze.com
 p. 800.787.7325 | f. 800.448.2908



Surface Mount



Install CoolBalance. Save the servers.

CB22H

For cutouts against a wall or other obstruction – utilize a CB22H which consists of two corners, three sides and one brush.

MODEL NUMBER CONSTRUCTION

CB22H-DDWW where DD= cutout depth, WW=Width

Example Model Numbers: CB22H

Cut Out		Model Number
Depth inches	Width (5-24 in.)	
2	WW	CB22H-02WW
3	WW	CB22H-03WW
4	WW	CB22H-04WW
5	WW	CB22H-05WW
3	10 in.	CB22H-0310

example part number:

INSTALLATION

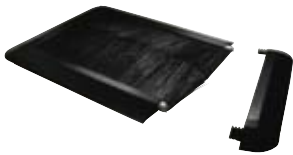
Select the model that fits completely over the cutout hole (CB22-0309 for a 3 x 9 in. hole). Place the CoolBalance seal over the cutout hole and affix with the provided screws or double-sided tape (not provided).

For cutouts with shorter than standard width but with a standard depth:

Select the Model No. with a longer width closest to the cutout width. The side channels and brushes can be cut to length using a hand hack saw (side channels, only) and a bolt cutter for the brush. The brush and side pieces are easily assembled and the end pieces connected to the side channels.

TILE CUTOUT SPECIFICATIONS

The CB22 Surface-Mount Cable Seal can be installed over holes of irregular sizes. Simply make sure the seal in its final configuration is of sufficient size to permit taping or mounting with the provided screws (the side channels and corner pieces must rest completely on the floor).

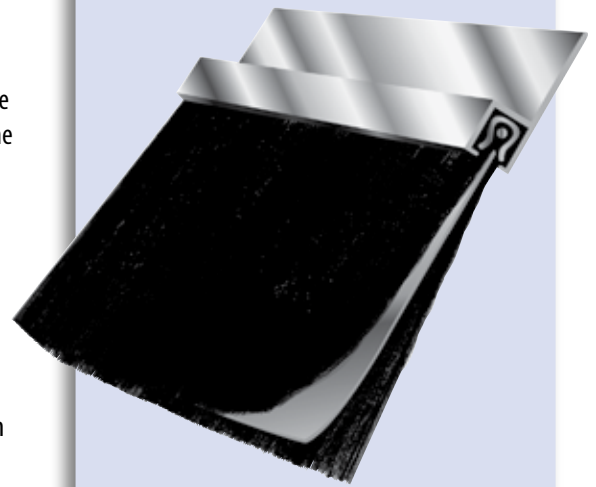


About Sealeze, A Unit of Jason Incorporated

For more than 30 years, engineers, contractors and installers have looked to Sealeze to design and manufacture brush sealing solutions for a wide variety of industrial and air sealing applications. Sealeze manufactures strip brush in the broadest range of sizes, with the largest number of filament types, and provides the widest range of holders to meet the needs of almost any application. Sealeze has been providing brush sealing solutions in data centers, from floor cable seals to technical furniture and cabinets, since the mid 1990s.

XtraSeal™ TECHNOLOGY

Sealeze XtraSeal™ is a technology that provides an effective seal between two areas of different dynamic pressures. XtraSeal brush seals use a solid sheet of thin, flexible material (EPDM membrane) sandwiched between layers of filament. The filaments hold the membrane in position to provide an additional, almost impenetrable air barrier.



Brush sealing solutions for over 30 years.

8000 Whitepine Road | Richmond, VA 23237
 sealeze.com | coolbalance@sealeze.com
 p. 800.787.7325 | f. 800.448.2908

coolbalance.biz

