



Brush Seal Solutions for Computer Facilities

Install CoolBalance.
Save the servers.



Through-Wall, Round

CB55

APPLICATION

The CB55 Cable Seal for Through-Wall Cutouts is available for 4.5 or 6.75 in. cutouts where a small number of power and communications cables need to be accommodated. For larger cutouts or where larger numbers of cables need to be accommodated, use the CB44 Wall Seal. Typically used for sealing room-to-room cable cutouts in the portion of the wall below the raised computer room floor, the CB55 series provides a seal that prevents conditioned air from escaping into mechanical rooms or up the insides of walls. The CB55 prohibits damage to the wall material or cables and allows for additional cabling in the future.

Construction: ABS plastic holder with PVC pipe, nylon 6 brush

Hole Sizes: CB55EP-04: 4.5 in. diameter cutouts
CB55EP-06: 6.75 in. diameter cutouts

DESCRIPTION

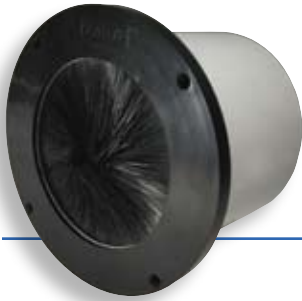
The CB55 Cable Seal for Through-Wall Cutouts consists of a single, 4.5 or 6.75 in. diameter brush spiral mounted in a black ABS holder with PVC pipe conduit. The PVC piping and brush provide support for the cables and protect the cables from the rough edges of the walls and protect the walls from deterioration caused by cable weight or movement.



Brush sealing solutions for over 30 years.

coolbalance.biz

8000 Whitepine Road | Richmond, VA 23237
sealeze.com | coolbalance@sealeze.com
p. 800.787.7325 | f. 800.448.2908



Through-Wall, Round

Install CoolBalance. Save the servers.

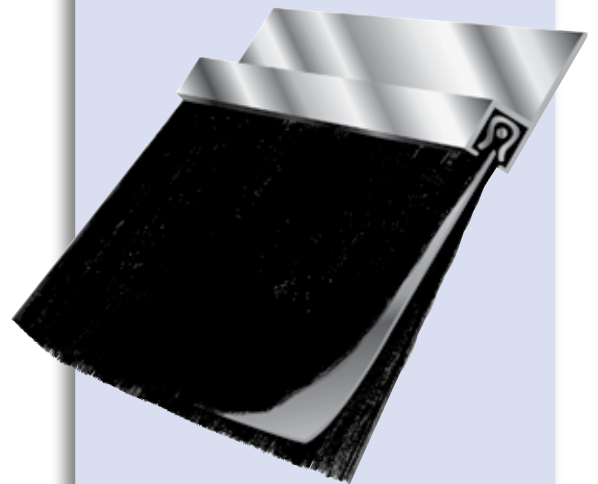
CB55

INSTALLATION

CB55 Cable Seals for Through-Wall Cutouts mounts in a 4.5 or 6.75 in. diameter wall cutout. The unit simply slides into the cutout and is mounted with screws, double-sided tape or any other bonding agent. The flange and brush assembly are mounted on the air-conditioned side of the wall for maximum effectiveness.

XtraSeal™ TECHNOLOGY

Sealeze XtraSeal™ is a technology that provides an effective seal between two areas of different dynamic pressures. XtraSeal brush seals use a solid sheet of thin, flexible material (EPDM membrane) sandwiched between layers of filament. The filaments hold the membrane in position to provide an additional, almost impenetrable air barrier.



About Sealeze, A Unit of Jason Incorporated

For more than 30 years, engineers, contractors and installers have looked to Sealeze to design and manufacture brush sealing solutions for a wide variety of industrial and air sealing applications. Sealeze manufactures strip brush in the broadest range of sizes, with the largest number of filament types, and provides the widest range of holders to meet the needs of almost any application. Sealeze has been providing brush sealing solutions in data centers, from floor cable seals to technical furniture and cabinets, since the mid 1990s.



Brush sealing solutions for over 30 years.

8000 Whitepine Road | Richmond, VA 23237
sealeze.com | coolbalance@sealeze.com
p. 800.787.7325 | f. 800.448.2908

coolbalance.biz



© 2010 Sealeze, A Unit of Jason Incorporated